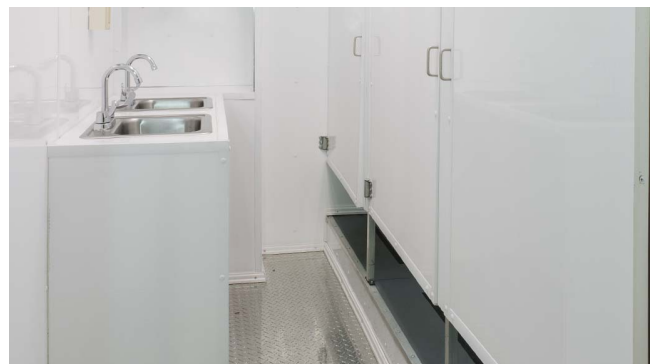


ISO 9001 CERTIFIED

## CONTAINERIZED TOILET UNIT

Designed for field operations, our Containerized Toilet Units (CTUs) provide basic amenities inside a rugged 20' ISO container. Each unit includes interior lighting, flushing toilets, sinks, ventilation, and privacy walls.

Units can be operated independently or combined with additional restroom units to support larger events. They can be positioned on the ground or left on the chassis for added flexibility. CTUs are ideal for military exercises, special events, or disaster relief operations.



## KEY FEATURES

### CONTAINERIZED TOILET UNIT

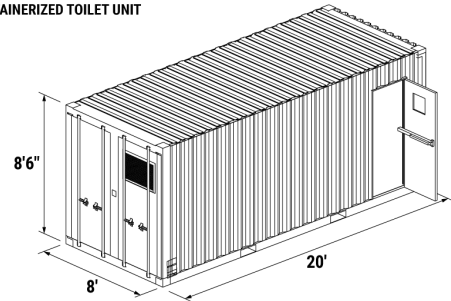
- Size:** 8'W x 8'6"H x 20'D
- Footprint:** 8' x 20'
- Weight:** 8,000 lbs
- Water Inlet:** 2" NPT
- Power:** 50A 220V Plug
- HVAC:** 1-Ton Heat/AC Unit
- Water Heater:** 20 Gallon – LP Gas or Electric
- Toilets:** 6
- Sinks:** 2

### COLORS

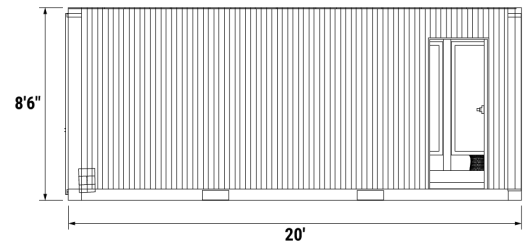
-  Sand
-  Custom

Specifications may vary. [Contact](#) Deployed Resources for more information.

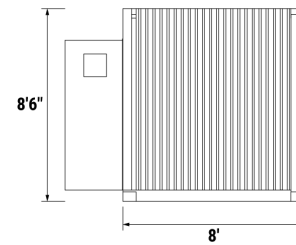
CONTAINERIZED TOILET UNIT



CONTAINERIZED TOILET UNIT  
FRONT VIEW



CONTAINERIZED TOILET UNIT  
RIGHT SIDE VIEW



CONTAINERIZED TOILET UNIT  
TOP VIEW

