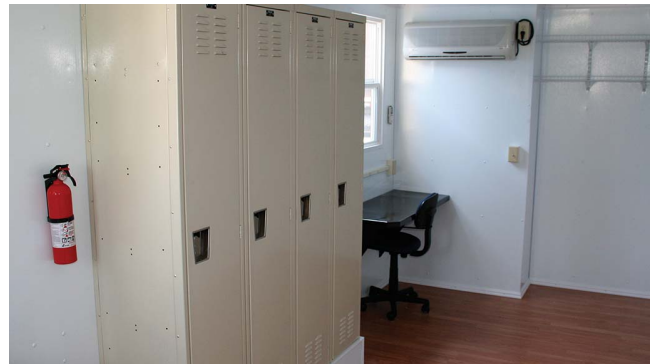


ISO 9001 CERTIFIED

CONTAINERIZED OFFICE UNIT

Containerized Office Units (COUs) provide ideal workspace in less than ideal conditions. Each office unit comes equipped with two desks, four storage lockers, two beds (can be removed for additional workspace), remote controlled heating and cooling, four drawer file cabinet, fire alarm & fire extinguisher, and ample outlets. Optional satellite connectivity can also be added to provide phone and internet capabilities. Depending on site conditions and duration units can be positioned on ground or left on chassis for added flexibility.



KEY FEATURES

CONTAINERIZED OFFICE UNIT

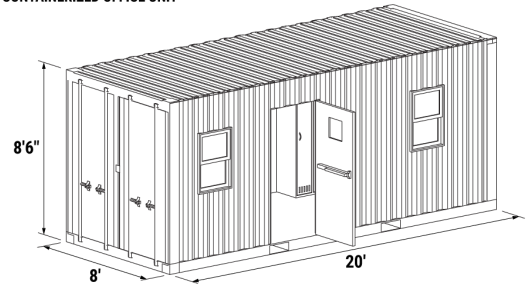
- Size:** 8'W x 8'6"H x 20'D
- Footprint:** 8' x 20'
- Weight:** 8,000 lbs
- Power:** 50A 220V Plug
- HVAC:** 1-Ton Heat/AC Unit
- Room:** 1
- Lockers:** 4
- Desks:** 2

COLORS

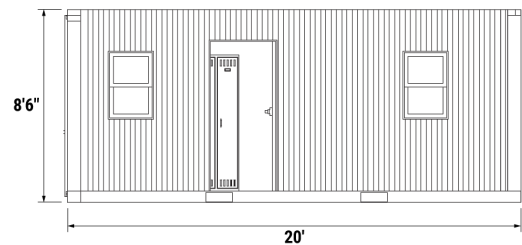
- Sand
- Custom

Collapsible Modular Units come in sand and white only. Specifications may vary. [Contact](#) Deployed Resources for more information.

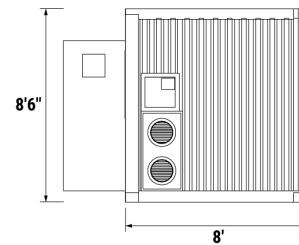
CONTAINERIZED OFFICE UNIT



CONTAINERIZED OFFICE UNIT
FRONT VIEW



CONTAINERIZED OFFICE UNIT
RIGHT SIDE VIEW



CONTAINERIZED OFFICE UNIT
TOP VIEW

